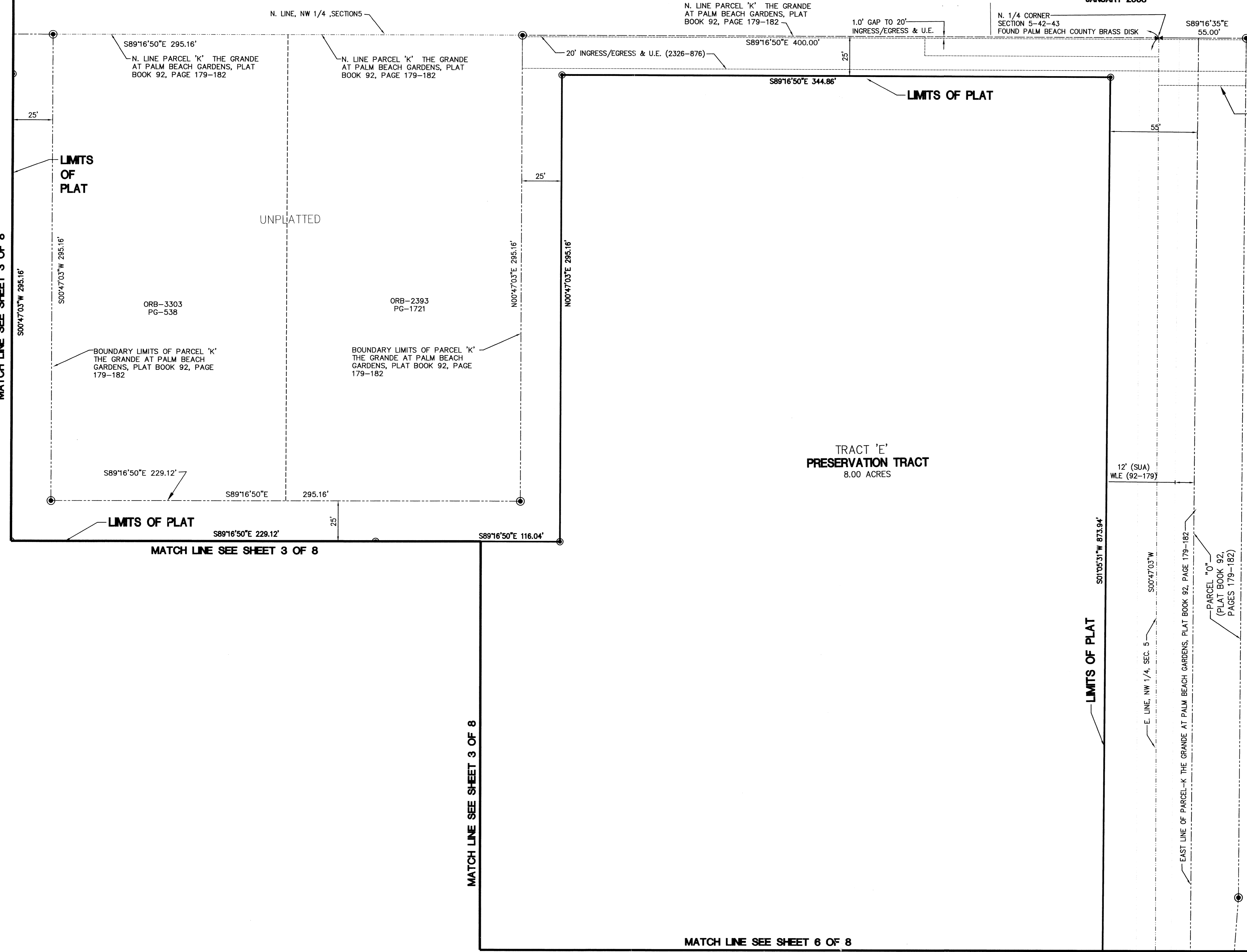


# HARBOUR OAKS

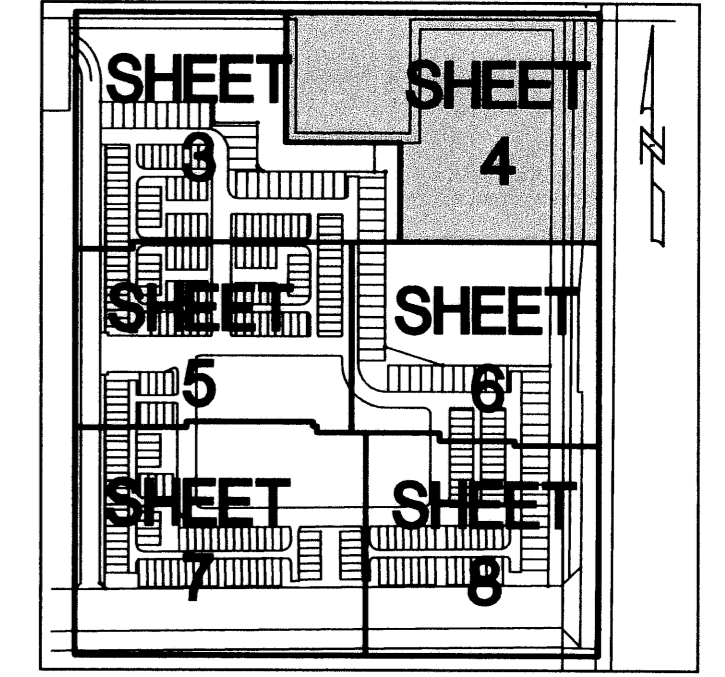
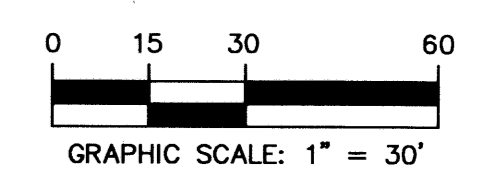
A PARCEL OF LAND LYING AND BEING WITHIN A PORTION OF SECTION 5, TOWNSHIP 42 SOUTH, RANGE 43 EAST, ALSO BEING A REPLAT OF A PORTION OF THE GRANDE AT PALM BEACH GARDENS, PLAT BOOK 92, PAGES 179-182 CITY OF PALM BEACH GARDENS, PALM BEACH COUNTY, FLORIDA

THIS INSTRUMENT WAS PREPARED BY:  
 THOMAS C. SHAHAN, P.S.M. #4387 OF  
**CRAVEN-THOMPSON & ASSOCIATES, INC.**  
 ENGINEERS PLANNERS SURVEYORS  
 5114 OCEANOBEY BOULEVARD, SUITE 112, WEST PALM BEACH, FLORIDA 33417  
 TEL: (561) 888-2010 FAX: (561) 688-1037  
 3563 N.W. 53RD STREET, FORT LAUDERDALE, FLORIDA 33309  
 TEL: (954) 738-8400 FAX: (954) 738-8408  
 FLORIDA LICENSED ENGINEERING, SURVEYING & MAPPING BUSINESS NO. 271  
 FLORIDA LICENSED LANDSCAPE ARCHITECTURE BUSINESS NO. C000114  
 JANUARY 2003 02-0070



STATE OF FLORIDA  
 COUNTY OF PALM BEACH  
 THIS PLAT WAS FILED FOR RECORD AT  
 THIS \_\_\_\_\_ DAY OF \_\_\_\_\_, 2003  
 AND DULY RECORDED IN PLAT BOOK NO. \_\_\_\_\_  
 ON PAGES \_\_\_\_\_  
 DOROTHY H. WILKEN,  
 CLERK OF THE CIRCUIT COURT  
 BY \_\_\_\_\_ DEPUTY CLERK

SHEET 4 OF 8



- LEGEND
- ⊙ - PERMANENT REFERENCE MONUMENT
  - - PERMANENT CONTROL POINT
  - R - RADIUS
  - L - LENGTH
  - Δ - DELTA
  - ⊙ - CENTERLINE
  - D.E. - DRAINAGE EASEMENT
  - L.M.E. - LAKE MAINTENANCE EASEMENT
  - R.O.E. - ROOF OVERHANG EASEMENT
  - U.E. - UTILITY EASEMENT
  - L.E. - LANDSCAPE EASEMENT
  - S.U.A. - SEACOAST UTILITY AUTHORITY
  - OS - OPENSOURCE TRACT
  - WSE - WATER AND SEWER EASEMENT
  - WME - WATER MANAGEMENT EASEMENT
  - WLE - WATER LINE EASEMENT

TRACT	ACRES	SQUARE FEET
A	6.901	300600.49
B	3.744	163070.48
C	0.786	34250.44
D	3.011	131159.16
E	8.00	348480.00